



# Del Webb®

-----  
BUILD QUALITY EXPERIENCE™  
-----

## WHAT TO EXPECT WHEN YOU PARTNER WITH DEL WEBB®

When you build a quality, new home with Del Webb, we are with you every step along the way. That is what the Del Webb Build Quality Experience is all about: a step-by-step process that fosters communication, attention to detail and paramount quality. When your home is finished, it's covered by a new-home, limited warranty.

## YOU WILL MEET WITH YOUR DEL WEBB FIELD MANAGER DURING THESE THREE STEPS:

### INTRODUCTION

---

The experience begins with the Introduction, where you will meet your Field Manager. He or she will go over everything from the home site to your plan selections. This is also when you will establish a communication plan for the homebuilding process, because communication is key.

### ORIENTATION

---

During Orientation, you will get to know your new home by seeing the mechanical, electrical and plumbing inside the unfinished walls. This helps create an understanding of where things are and how they work.

### CELEBRATION

---

When your home is complete, it's time for Celebration. You and your Field Manager will tour the entire house. It's the culmination of all the communication and hard work that makes a Del Webb home possible.



# THE COMPLETE DEL WEBB® BUILD QUALITY EXPERIENCE

## 1. INTRODUCTION

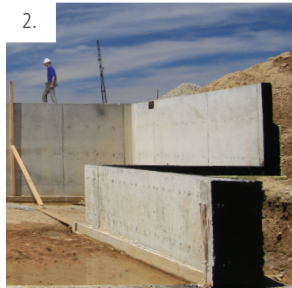


This is when you meet your Del Webb Field Manager—your partner throughout the experience. He or she will go over everything from your plan selections and options, to establishing a communication plan that works for you.



## 2. FOUNDATION INSPECTION

Your Field Manager will inspect your new home's foundation to make sure everything is off to a great start. After that, the local municipality will also conduct its inspection of the foundation.



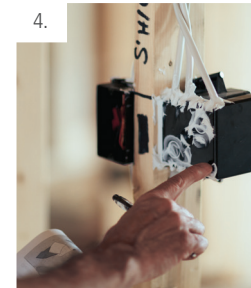
## 3. FRAME INSPECTION

Next, your Field Manager inspects your home's framing, with an eye for bulges, bows or any irregularities.



## 4. PRE-DRYWALL INSPECTION

Then it's time to review your home's insulation, plumbing, electrical and mechanical installations, and confirm that all the mechanical options have been included and properly installed.



## 5. ORIENTATION



Before we put up the drywall, you will be given a guided walk-through to show you your home's mechanical systems that will soon be enclosed. It's also your first chance to really envision what the actual living space will be like.



## 6. FINAL INSPECTION

This is the stage right before final completion of your home. At this stage, your Field Manager reviews the components in your home. This is your Field Manager's official verification of the quality of your nearly completed home.



## 7. CONFIRMATION

After your Field Manager's Final Inspection, a Del Webb service representative performs an additional quality review.



## 8. CELEBRATION



Your new home is ready for move-in, and it's time for the most important inspection: yours. This is also when you will learn all about your new home. You and your Field Manager will celebrate with a tour of the entire house to examine the quality and care that is built in.



## 9. LIVING

This is your opportunity to give feedback on your home 90 days after move-in. We care about your opinion and stand behind what we build.



## 10. BUILT TO LAST

After you have lived in your new home for one year, we will ask for your valuable feedback based on daily living for the year. This is how we constantly improve our homes and the Del Webb Build Quality Experience.

The DEL WEBB BUILD QUALITY EXPERIENCE is about our goal of delivering a quality new home to you. Each home also comes with a limited warranty. To learn more about the warranty, visit [delwebb.com/warrantyinfo](https://delwebb.com/warrantyinfo). Quality review is performed on-site by Del Webb employees, and not outside consultants. Visit the community for detailed lists of options/upgrades and other optional items and for additional important disclosures for the community and the home. Photographs are for illustrative purposes only, are not intended to be an actual representation of a specific home being offered and depict models containing features or designs that may not be available on all homes or that may be available for an additional cost. This material shall not constitute a valid offer in any state where prior registration is required or if void by law. At Del Webb communities, at least one resident must be 55 years of age or older, no one under 19 (18 in certain communities) in permanent residence, and additional restrictions apply. Some residents may be younger than 55. Del Webb is a registered trademark of PH3 Corporation. © 2016 Pulte Home Corporation. All rights reserved. [May 2016]